

## Fluorescein cadaverine

Fluorescein cadaverine can be coupled to activated carboxy groups or sulfonyl chlorides.



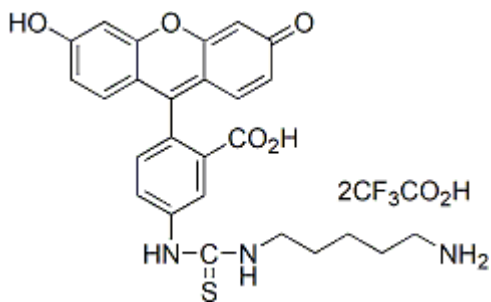
### Product attributes

Excitation/Emission	493/517 nm (pH 9)
---------------------	-------------------

## Product Description

Fluorescein cadaverine can be coupled to activated carboxy groups or sulfonyl chlorides.

- $\lambda_{Ex}/\lambda_{Em}(pH9) = 493/517$  nm
- Yellow solid soluble in DMSO, DMF, or pH>6.5 buffers
- Store at 4°C and protect from light
- $C_{30}H_{27}F_6N_3O_9S$
- MW: 719.61



This datasheet was generated on May 8, 2026 at 04:06:21 PM. Visit product page to check for updated information before use.

Product link: <https://biotium-woo.supremeclients.com/product/fluorescein-cadaverine/>