

Biotin SE

Biotin SE (Biotin, succinimidyl ester) is readily coupled to a primary or secondary amine under mild conditions.

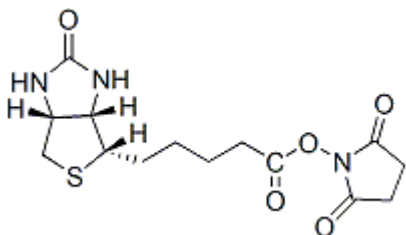


Product attributes

Product Description

Biotin SE (Biotin, succinimidyl ester) is readily coupled to a primary or secondary amine under mild conditions.

- White solid soluble in DMSO and moderately soluble in DMF
- Store at -20 °C
- C₁₄H₁₉N₃O₅S
- MW: 341.38



References

1. Bioconjugate Chem 8, 552 (1997).
2. Bioconjugate Chem 8, 545 (1997).
3. J Immunol 159, 5871 (1997).

This datasheet was generated on May 8, 2026 at 02:18:17 AM. Visit product page to check for updated information before use.
Product link: <https://biotium-woo.supremeclients.com/product/biotinsuccinimidyl-ester-biotin-se/>