

## FAM SE, 5 and 6 isomers

5(6)-FAM SE (full name: 5-(and-6)-Carboxyfluorescein, succinimidyl ester mixed isomers) is an amine-reactive green fluorescent dye widely used for labeling proteins or other molecules that contain a primary or secondary aliphatic amine. The coupling reaction is usually carried out at pH 8-9.5.



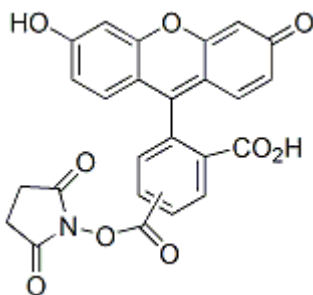
### Product attributes

CAS number	117548-22-8
Excitation/Emission	495/519 nm

## Product Description

5(6)-FAM SE (full name: 5-(and-6)-Carboxyfluorescein, succinimidyl ester mixed isomers) is an amine-reactive green fluorescent dye widely used for labeling proteins or other molecules that contain a primary or secondary aliphatic amine. The coupling reaction is usually carried out at pH 8-9.5. The amide linkage from the coupling reaction is much more stable than the thiourea linkage formed from the coupling of an amine and an isothiocyanate.

- $\lambda_{Ex}/\lambda_{Em} = 495/519$  nm
- Yellow solid soluble in DMSO or DMF
- Store at  $-20^{\circ}\text{C}$  and protect from light
- $\text{C}_{25}\text{H}_{15}\text{NO}_9$
- MW: 473.4
- [117548-22-8]



This datasheet was generated on May 8, 2026 at 04:57:31 PM. Visit product page to check for updated information before use.  
Product link: <https://biotium-woo.supremeclients.com/product/5-and-6-carboxyfluorescein-succinimidyl-ester-56-famse-mixed-isomers/>