

## TAMRA SE, 5 and 6 isomers

5(6)-TAMRA SE (full name: 5-(and-6)-Carboxytetramethylrhodamine succinimidyl ester (mixed isomers)) is the amine reactive form of TAMRA, one of the most commonly used red fluorescent dyes. The succinimidyl ester reacts readily with primary or secondary amines under mild conditions.



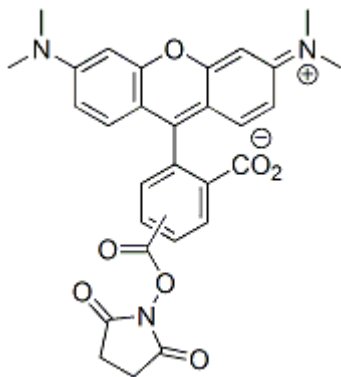
### Product attributes

CAS number	150408-83-6
Excitation/Emission	540/565 nm

### Product Description

5(6)-TAMRA SE (full name: 5-(and-6)-Carboxytetramethylrhodamine succinimidyl ester (mixed isomers)) is the amine reactive form of TAMRA, one of the most commonly used red fluorescent dyes. The succinimidyl ester reacts readily with primary or secondary amines under mild conditions.

- $\lambda_{Ex}/\lambda_{Em}$  (MeOH) = 540/565 nm
- $\epsilon > 90,000$
- Red solid soluble in DMF or DMSO
- Store at  $-20^{\circ}\text{C}$  and protect from light
- $\text{C}_{29}\text{H}_{25}\text{N}_3\text{O}_7$
- MW: 527.5
- [150408-83-6]



This datasheet was generated on May 9, 2026 at 01:31:07 AM. Visit product page to check for updated information before use.

Product link: <https://biotium-woo.supremeclients.com/product/5-and-6-carboxytetramethylrhodamine-succinimidyl-ester-mixed-isomers-56-tamra-se/>