

Sulforhodamine G

Similar to other sulforhodamine dyes, the highly water-soluble sulforhodamine G can also be used as a polar tracer for the studies of cell morphology and neuronal cell-cell communication (1-3).



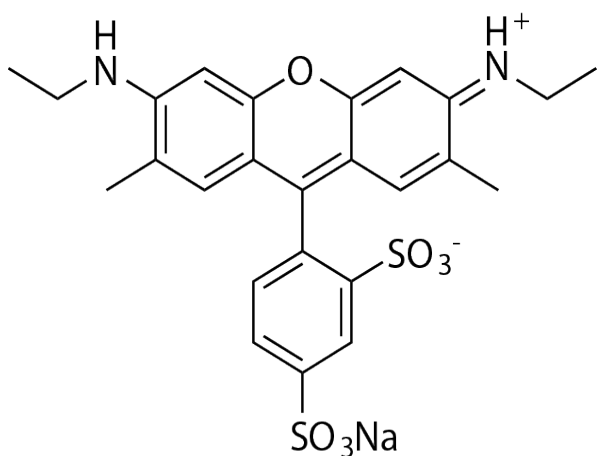
Product attributes

CAS number	5873-16-5
Probe cellular localization	Fluid phase tracer
Cell permeability	Membrane impermeant
Colors	Red
Excitation/Emission	529/548 nm

Product Description

Similar to other sulforhodamine dyes, the highly water-soluble sulforhodamine G can also be used as a polar tracer for the studies of cell morphology and neuronal cell-cell communication (1-3).

- $\lambda_{Ex}/\lambda_{Em} = 529/548$ nm
- Orange red solid soluble in water
- Store at room temperature
- $C_{25}H_{25}N_2NaO_7S_2$
- MW: 530.6
- [5873-16-5]



References

1. Meth Enzymol 221, 234 (1993).
2. J Biol Chem 267, 18424 (1992).
3. Plant Cell Environ 17, 257 (1994).

This datasheet was generated on May 8, 2026 at 09:58:20 PM. Visit product page to check for updated information before use.
 Product link: <https://biotium-woo.supremeclients.com/product/sulforhodamine-g/>