

## DilC1(5)

# (1,1'-dimethyl-3,3,3',3'-tetramethylindodicarbonyl iodide)



The carbocyanine dye DilC<sub>1</sub>(5) has been used to measure mitochondrial membrane potential in apoptotic cells. Loss of membrane potential in apoptotic cells is reflected by a decrease of fluorescence signal in the infrared channel.

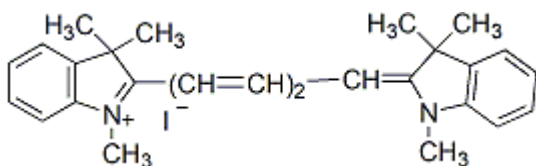
### Product attributes

Probe cellular localization	Mitochondria
For live or fixed cells	For live/intact cells
Assay type/options	Real-time imaging
Cell permeability	Membrane permeant
Apoptosis/viability marker	Mitochondrial potential
Potential dependence	Mitochondrial potential-dependent
Colors	Far-red
Excitation/Emission	638/658 nm

## Product Description

The carbocyanine dye DilC<sub>1</sub>(5) has been used to measure mitochondrial membrane potential in apoptotic cells. Loss of membrane potential in apoptotic cells is reflected by a decrease of fluorescence signal in the infrared channel.

- $\lambda_{Ex}/\lambda_{Em}$  (MeOH) = 638/ 658nm
- Dark green solid soluble in DMSO or DMF
- Store at 4 °C and protect from light
- C<sub>27</sub>H<sub>31</sub>IN<sub>2</sub>
- MW: 510.46



## References

1. Cytometry 33, 333 (1998).